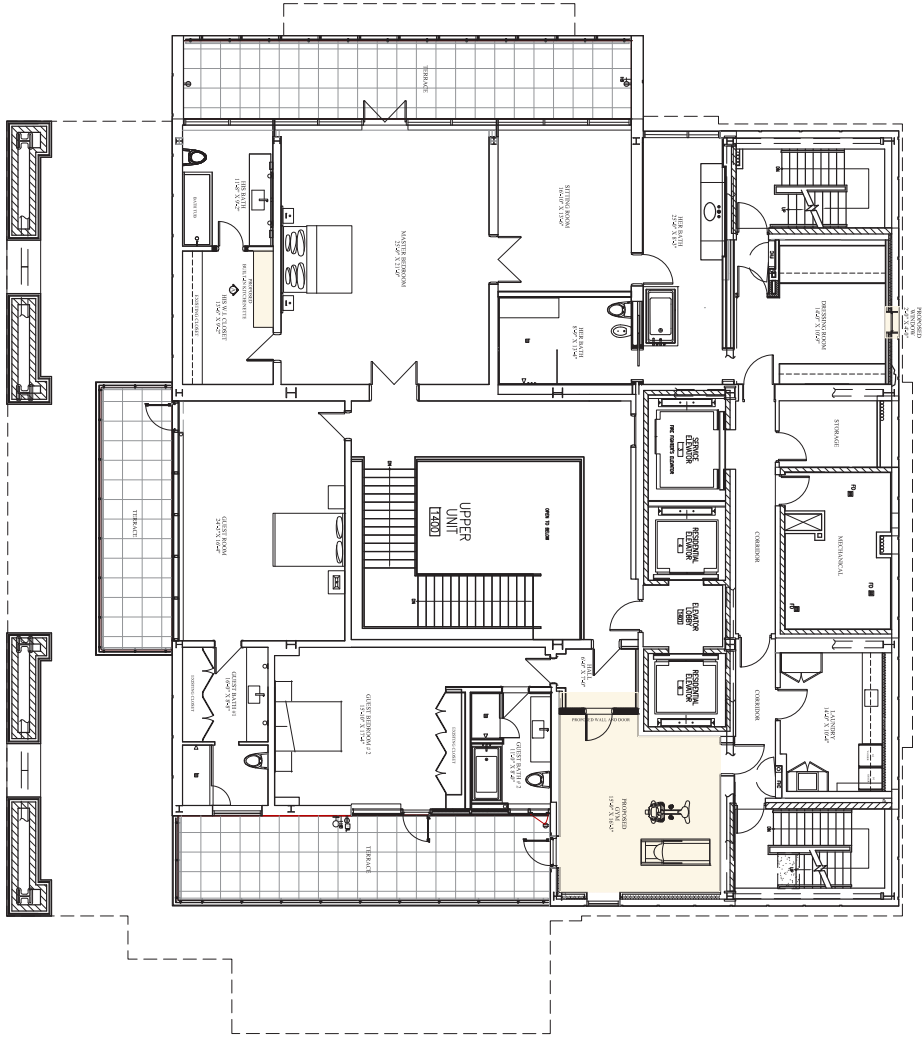
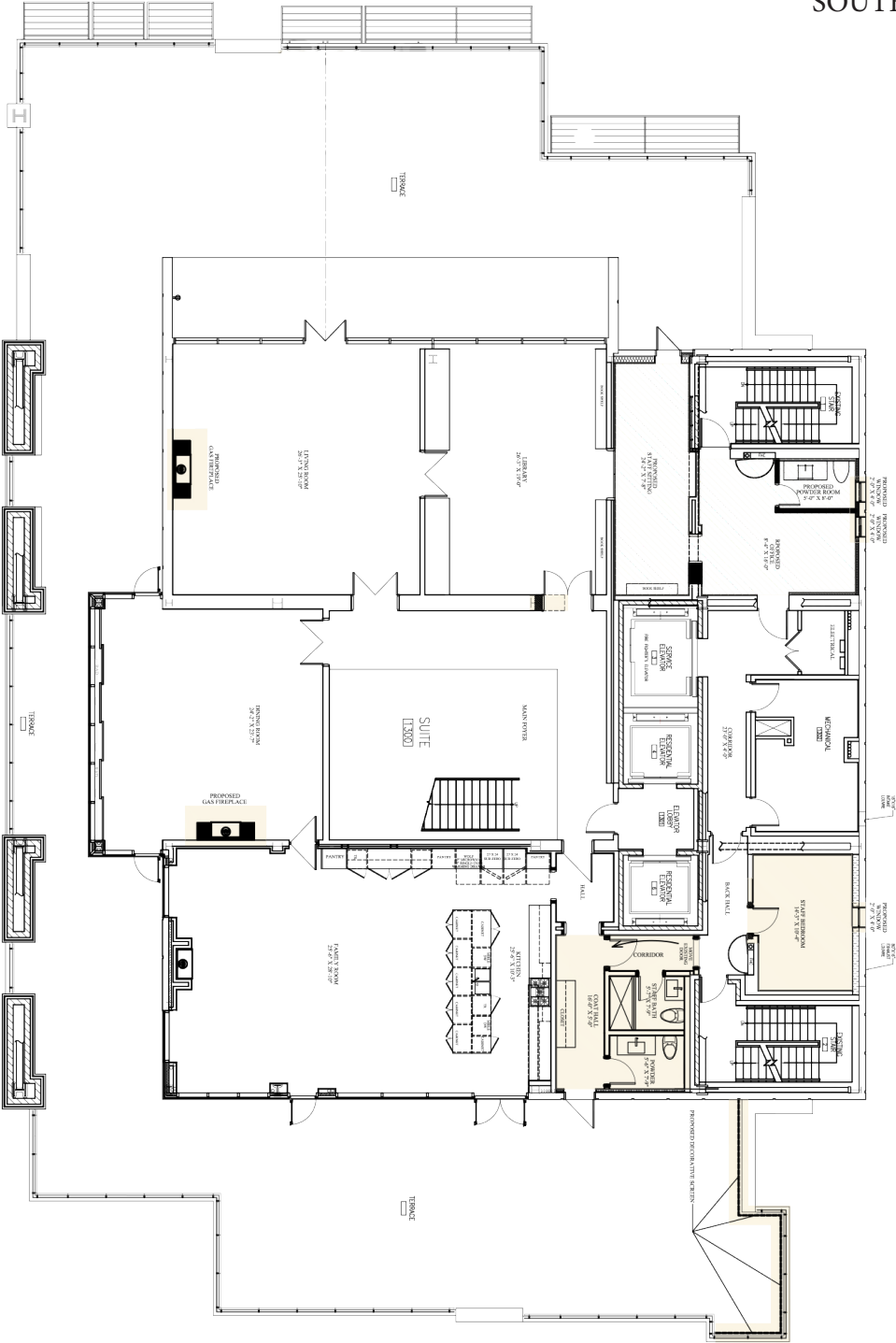


SOUTH



Corp #: TSCC/2079, Level 4 Unit 1, Large Locker
 Possession: TBA
 10,200 SQ FT as per builders; 5000 SQ FT of terrace
 Parking Spaces: 4
 Taxes 2017: \$80,085.27
 Maintenance: \$11,696 includes building insurance, common elements, parking, water

There have been modifications made to this plan.